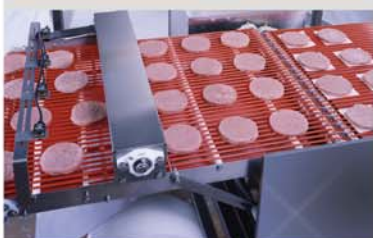


Your Solution for Grouping, Interleaving and Stacking PATTIES



PPI-200

INTERLEAVER STACKER

FEATURES AND BENEFITS

-  Rugged stainless steel construction
-  Designed to meet or exceed meat industry sanitation standards
-  Control and drive enclosures are temperature controlled and fully gasketed
-  PLC design allows easy production set-up, changes, and networking with other equipment
-  Custom design easily interfaces with your slicer and packaging machinery
-  Product alignment system corrects leading edge misalignment in multi-lane operations by straightening fresh or frozen patties into even rows without the use of bars or other devices that may distort the product
-  Variety of modular counter stackers available to fit your application
-  High-speed fully automatic operation
-  Remote monitoring and diagnostic system (RMDS) available


pacproinc
Packaging Progressions, Inc.

610-489-8601

Iron Bridge Corporate Center
102 G.P. Clement Drive
Collegeville, PA 19426-0244

fax 610-489-8691
sales@pacproinc.com
www.pacproinc.com

Interleaver Specifications

UTILITIES

Electrical 220 VAC
single phase
20 amp

Pneumatic 60 PSI @ .5 CFM

PRODUCTION RATES

Up to 100 PPM single lane

INTERLEAVING MATERIAL

Paper Uncoated,
wet or dry waxed,
silicone coated,
parchment

Film High/low density
poly

Rollstock

Up to 18" diameter x 13" wide
with a 3" diameter core

PRODUCT CONFIGURATION

Round, square, rectangle, oval,
group or matrix

